

TPC Training's exhaustive operator and technician training program successfully develops critical maintenance knowledge and shortens machine-troubleshooting processes.

TPC Training's established industrial skills training program employs a complete portfolio of technical and safety training services. Each training plan enhances operator and technician skills by focusing training on key areas that are critical to each job requirement. As a total solution, TPC provides customized, individualized workforce development tools that utilize a unique set of technical skills and safety training. TPC excels in growing fundamental skills with new hires to generating troubleshooting efficiency from senior personnel.

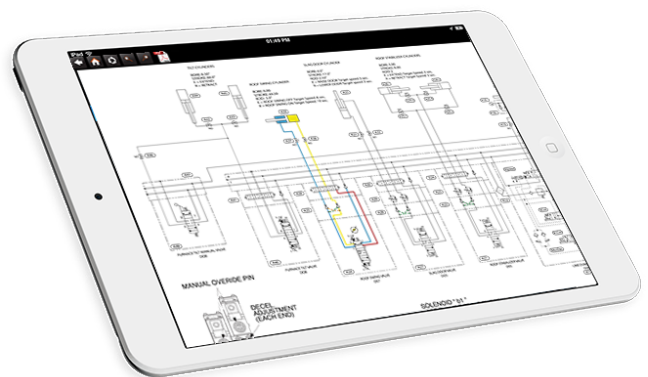
TPC Training's exhaustive workforce development program:

- Drives efficiency in senior technician utilization.
- Enhances new hire fundamental knowledge and troubleshooting techniques.
- Captures critical machine documentation and troubleshooting.
- Assesses technical and safety knowledge.

At the core of TPC Training's services is an industry-leading E-learning management system (LMS), TPC Online™. With the most comprehensive industrial training catalog in the industry, TPC Online™ provides clients with interactive tools to develop a detailed training regimen that addresses key competency areas within their workforce. Assessment is key to maintaining a standard of quality throughout a workforce and each customized training plan is completed with online knowledge assessments for operators and technicians. TPC Online's™ adaptable skills assessments are comprised of TPC core knowledge questions and client-specific subjects that give administrators a benchmark to measure training effectiveness across the facility or the entire company. In addition to training a workforce to a common set of standards, TPC Operate modules upgrade

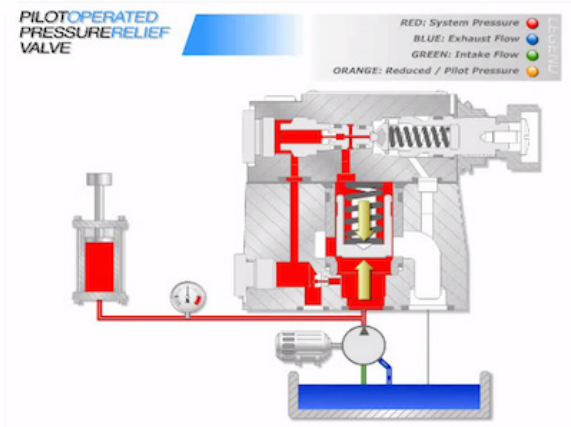
troubleshooting processes and ongoing job support throughout client facilities. These custom-built, interactive schematic applications enable maintenance technicians, at any competency level, to better address downtime for failing industrial equipment. TPC Operate achieves this by providing a platform for immediate access to critical job-specific information to workers in the field. The application gives TPC's clients essential tools to efficiently maintain hydraulic, mechanical, pneumatic, and electrical equipment across industrial facilities by outlining any machine's operating events. Each module includes validated schematics, a description of operation for each machine event, specific component related information and custom documentation.

After implementing a full-scale training program with, Saudi Arabia's largest steel manufacturer, the exhaustive operator and technician training program had immediate results. The client is able to exploit veteran technicians across their facilities because critical system information is now readily available to all technicians working in the field. Veteran maintenance workers, who are the expert source for procedural information, can now focus on critical areas while lowering the amount overtime needed to operate the plant. Additionally, technicians can train on over 1,000 course hours of technical and safety core training subjects with TPC Online™. Implementing TPC's total training solutions, the client was able to utilize its current steel production personnel resources to maximize the facility's output.



With TPC Operate, technicians are able to drill-down into specific operating events critical to machine maintenance in the field.

"The large quantity of machine documentation that the steel manufacturer employs calls for a centralized, simpler system for accessing and searching for relevant information for each maintenance procedure," said Bobby Wood, EVP TPC Consulting. "TPC Operate is the perfect job support solution for their maintenance workforce as it cuts through the clutter and places important job-relevant information directly within each machine process."



Technicians are able to view detailed animations depicting how failing components operate assisting troubleshooting directly in the field.

The digital availability of TPC's training content makes its integration into workforce processes seamless. Workers are able to train on critical knowledge areas independently with TPC Online™ because the online LMS is accessible by any computer connected to the Internet. Additionally, TPC Operate is optimized for mobile devices, placing machine documentation and troubleshooting content in field technician's hands. TPC Training is the total training solution.



750 West Lake Cook Road
Buffalo Grove, IL 60089

(847) 808-4000
sales@tpctraining.com
tpctraining.com

Training Development Process:

1. TPC's training and industry-specific subject matter experts conduct a detailed review of actual processes and equipment.
2. On Site Teams conduct a detailed review of actual processes and equipment.
3. Information/technical data is collected/organized for tailored learning and maintenance content development.
4. Machine-specific TPC Operate as well as other electronic reference and E-learning materials are custom developed.
5. Client receives tailored integrated digital materials that provide effective training and responsive maintenance support.

For more information about TPC Training, please visit tpctraining.com. You can also contact us at **800.837.8872** or at sales@tpctraining.com.

About TPC Training: TPC Training is a privately held company with headquarters in Buffalo Grove, IL. The companies held by TPC Training collectively offer a complete portfolio of training methods, including online, classroom, on-site, continuing education, and on-the-job. The company has helped more than 45,000 client sites globally to train over 3.5 million skilled workers.

Select the link below

to learn about how TPC's instructors can also add expert hands-on training to your workforce training program.

Explore the Live Training Difference