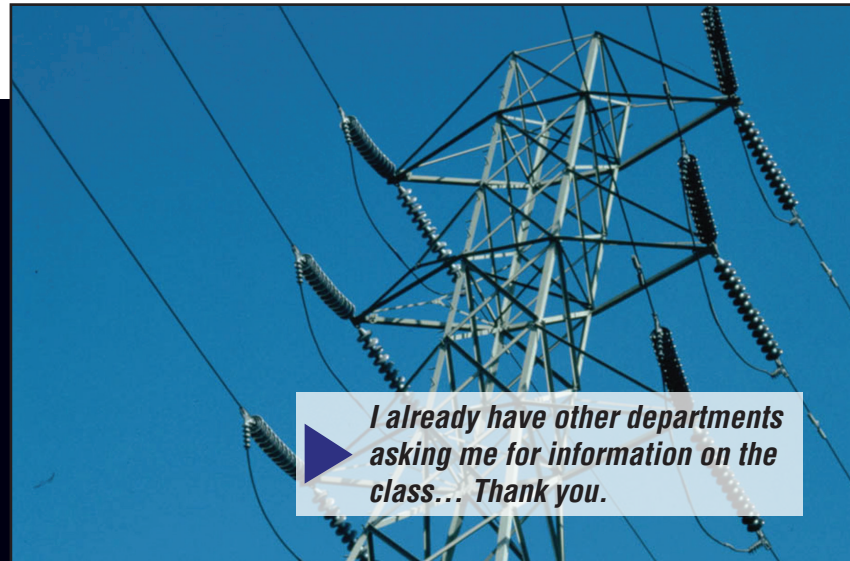


### Learn About:

- Meeting OSHA requirements
- Power generation, transmission, and distribution installations
- Line clearance
- Specific electrical safety procedures and work practices
- Emergency control procedures
- Safely managing and maintaining tools and equipment
- Arc flash hazards and preventing electrical hazards
- Testing requirements for machines and equipment
- Inspection requirements and procedures
- Lockout/tagout process and procedures
- Ground fault interruption
- Appropriate clearance, boundaries, and approach distances
- Determining voltage and energized equipment
- Protective grounding

# High Voltage Electrical Safety for Power GTD

## 29 CFR 1910.269



*I already have other departments asking me for information on the class... Thank you.*

## A 2-Day Seminar for Power, Transmission and Distribution Systems

- Reserve your space now! **CALL 1-877-978-7246**
- Check us out online at [live.tpctraining.com](http://live.tpctraining.com) for a complete listing of all seminars coming to your area
- This seminar is also available as an **Online Simulcast** or can be brought **On-Site** to your facility

## SEMINAR OVERVIEW

The foremost purpose of this High Voltage Electrical Safety for Power GTD training seminar is to keep employees safe while working on or around high voltage power generation, transmission and distribution systems and equipment. In this seminar, students will learn how to work safely and efficiently around high voltage electricity. OSHA Requirement 29 CFR 1910.269 covers the operation and maintenance of electric power generation, control, transformation, transmission, and distribution lines and equipment. This seminar will outline all of the requirements in this OSHA ruling and how it applies to all electric power GTD operations. This High Voltage Electrical Safety Training seminar is specifically designed for personnel working on or around high voltage electrical lines, equipment or around substations, underground electrical installations or power generators.

## WHAT YOU WILL TAKE HOME

- Comprehensive classroom materials
- A Personalized Training Certificate with 0.8 TPC Training Continuing Education Units for each day attended, 1.6 for both days.
- All the information you need from asking our instructors specific questions about your own unique equipment or facility.

## CONTINUING EDUCATION

Upon completion of this seminar, the student will receive a Certification of Completion and .8 TPC Training CEUs per day attended. Most employers and many government agencies accept TPC Training CEUs to fulfill their continuing education requirements. If the student needs CEUs to renew a state license, please contact us at 303-867-5039 to ensure the state licensing board has approved the seminar. If we are currently not approved by your state licensing board, we are happy to begin the process as long as we receive your request at least one month before the training date.

## TRAINING PHILOSOPHY

TPC Training's curriculum is designed to provide complete coverage of essential industrial maintenance skills, across a full range of electrical training, HVAC, plant management, and mechanical & industrial topics. Our "see, touch, do" instructional approach allows us to impart practical skills in an intensive format.

The most vital part of our seminar format is the coverage that goes beyond the course outline. Our small class sizes allow each instructor to tailor the course to address students' individual needs, concerns, and experience levels. Our instructors deliver content with hands-on exercises, demonstrations role-playing, visuals, and case study discussions.

## DISCUSSION TOPICS

Day One reviews the relevant OSHA standard and examines electrical safety in the workplace. Students will learn the skills and techniques necessary to determine the nominal voltage of exposed live parts, the minimum approach distances corresponding to the voltages to which the qualified employee will be exposed, and the proper use of the special precautionary techniques, personal protective equipment (PPE), insulating and shielding materials, and insulated tools for working on or near exposed energized parts of electric equipment.

Day Two focuses on workplace hazards and how to safely work around power lines. We take the practical knowledge gained in day one and apply it to real world situations.

- The OSHA standard
- Electrical Current
- Electrical Shock, Arc and Blast
- Understanding of Electrical Hazards
- Electrical Lockout/Tagout
- De-energized Equipment
- Electrical Safety Work Practices
- Energized Equipment & Circuits
- Personal Protective Equipment
- Enclosed Spaces
- Ladders & Platforms
- Excavations
- Hand & Power Tools
- Material Handling & Storage
- Inspection of Test Instruments
- Working on or Near Energized Equipment
- Ground Fault Interrupters
- Ground Fault Protection Systems
- Clearance Distances for Installed
- Electrical Equipment
- De-energizing Lines
- Test and Test Facilities
- Overhead Lines
- Line Clearance
- Communication Facilities
- Maintenance of Electrical Equipment
- Grounding
- Underground Electrical Installations
- Power Generators
- Substations

## SEMINAR FEE & AGENDA

This 2-day course is just \$1195 (Earn 1.6 CEUs)

7:30 am	Registration
8:00 am	Class Begins
12:00 -1:00 pm	Lunch (on your own)
4:30 pm	Class Ends

## NO RISK REGISTRATION & MONEY-BACK GUARANTEE

You can reserve your space in the class at any time and cancel without penalty. Cancellations made more than 14 days prior to the seminar may be refunded or rescheduled. Cancellations made within 14 days may be rescheduled for any future topic and/or date. If you're not satisfied with the course, we'll promptly refund your payment.

## JOIN OUR CLASSROOM SEMINARS FROM VIRTUALLY ANYWHERE

[live.tpctraining.com/simulcast](http://live.tpctraining.com/simulcast)

Our simulcast option allows students to connect to a live classroom seminar via a web link, with the ability to participate fully in the classroom dialogue, exercises, and Q&A. Online participants get all the benefits of the full classroom experience, plus the convenience of remote access.

### Features include

- Two full days of live, interactive instruction from a TPC Training instructor
- All classroom materials in PDF format
- Certificate of completion for 16 hours of live training
- Full technical support to ensure your online experience is a rewarding one

## BRING THE TRAINING ON-SITE TO YOUR FACILITY

[live.tpctraining.com/on-site](http://live.tpctraining.com/on-site)

Every public seminar class in our Course Catalog can be conducted on-site, with the same expert instructors. To arrange an on-site training, call or email us at [onsite@tpctraining.com](mailto:onsite@tpctraining.com).

### Some Advantages of On-Site Training

- Cost Savings — Save time and travel costs by keeping workers on-site
- Customized Content — Tailor the seminar to your facility and equipment
- Flexibility — Accommodate multiple shifts and different start and end times

